



**CSR Impact Assessment
Report
of
Laurus Labs Limited
for
Financial Year
2021-2022 & 2022-
2023**

Prepared For:

M/s. Laurus Labs Limited

Reg. Office: Laurus Enclave, Plot Office 01, E.
Bonangi Village, Parawada (M), Anakapalli District,
Visakhapatnam, Andhra Pradesh, India, 531021.

Submitted By:

M/s. Ramasamy Koteswara Rao and Co LLP,

Chartered Accountants

Reg. Office: Sri Ramchandra Arcade,
#8-2-293/82/JIII/573/M/1F, Road No.82,
Jubilee Hills, Hyderabad,
Telangana-500096.

Email: audit@rkandco.in

Contact: 040-23394982/85

CSR

Table of Contents

Disclaimer.....	4 - 5
Overview of Laurus Labs Limited	6
Executive Summary.....	7 - 9
CSR Governance Mechanism.....	10
Approach and Methodology.....	11 - 12
Laurus contribution towards Sustainable Development Goals.....	13
Analysis of CSR Performance.....	14
CSR Impact Assessment.....	15
• Hyderabad Eye Institute.....	16 - 20
• Rotary Club Sparsh Hospice Centre.....	21 - 25
• Connect to Andhra & Modification of school in Moguluru.....	26 - 31
• Stipend for Gitam University Students.....	32 - 35
• International Crops Research Institute for Semi-Arid Tropics.....	36 - 40
• TTD Gardens.....	41 - 43
• Rural development projects near Plant site.....	44 - 46
List of Abbreviations used.....	47

Disclaimer

The report has been prepared in accordance with the Engagement Letter between The Laurus Labs Limited and Ramasamy Koteswara Rao & Co LLP, Chartered Accountants dated January 18th, 2024. Its purpose is to conduct an Impact Assessment of the projects undertaken during the financial year 2021-22 and 2022-23.

The report must be disclosed in its entirety, including the disclaimers. Ramasamy Koteswara Rao & Co LLP, Chartered Accountants did not conduct an audit and does not offer any opinion or assurance. The comments in the report do not constitute legal advice or opinion.. The report presents an analysis by Ramasamy Koteswara Rao & Co LLP, Chartered Accountants based on secondary sources and input gathered from interactions with the relevant team members of Laurus Labs Limited, Laurus Charitable Trust, Hyderabad Eye Institute, Moguluru School, ICRISAT, relevant project beneficiaries, and other implementation partners.

While the authenticity of information from public sources hasn't been verified, Ramasamy Koteswara Rao & Co LLP, Chartered Accountants, ensured to gather information from sources known for their reliability

Further, Ramasamy Koteswara Rao & Co LLP, Chartered Accountants states that:

- It has used and relied on data shared by the Laurus Labs Limited team, implementing agencies, and secondary research through the internet, research reports, and project target beneficiaries;

- It has neither conducted an audit nor due diligence nor validated the financial statements and projections provided by Laurus Labs Limited;
- Wherever information was not available in the public domain, suitable assumptions were made to extrapolate values for the same;
- The effectiveness of the recommendations in the report depends on the continued validity of these assumptions, which should be periodically reviewed and updated to reflect changes in business trends, regulations, or the organization's direction;
- It accepts no responsibility for the realization of the projected benefits;
- The premise of an impact assessment is 'the objectives' of the project along with output and outcome indicators pre-set by the program design and implementation team. Ramasamy Koteswara Rao & Co LLP, Chartered Accountants impact assessment framework was designed and executed in alignment with those objectives and indicators.

Overview of Laurus Labs Limited

Laurus Labs Limited is an Indian pharmaceutical company that specializes in the development, manufacturing, and marketing of active pharmaceutical ingredients (APIs), intermediates, and formulations. The company was founded in 2005 and is headquartered in Hyderabad, India.

As a company, Laurus Labs conducts business with utmost transparency and integrity. This helps them attract the best talent and win the trust of their stakeholders. Given that Laurus Labs operate in a highly regulated sector, and adopt a high-watermark approach to compliance to ensure that they exceed the requirements of all applicable international standards

Laurus Labs has a strong presence in the pharmaceutical industry, with a focus on research and development to create a diverse portfolio of products. The company is known for its expertise in areas such as oncology, anti-retrovirals, cardiovascular, anti-diabetics, anti-asthma, and gastro-intestinal. The company has commercialized 60+ products since inception across three distinct business units - Generics API, Generics FDF and Synthesis. Company's major focus areas include anti-retroviral, Hepatitis C and Oncology drugs, and work with all the top 10 generic pharmaceutical companies in the world. Company sells APIs in 56 countries. Their major focus areas include anti-retroviral, Hepatitis C and Oncology drugs.

Executive Summary

Corporate Social Responsibility is a model of corporate self-governance that encourages corporations to work with their communities and invest in their social, economic, and ecological growth. Along with being a statutory mandate enshrined in Section 135 of the Companies Act, 2013 and Companies (Corporate Social Responsibility) Rules, 2014, it is also an opportunity for corporations to create an impact beyond their commercial mandate.

The performance of a corporation's CSR endeavours is appraised by their impact. The quantity and quality of impact created by CSR activities indicate how successful a corporation has been in understanding the needs and challenges of the communities affected by its work, addressing these needs and challenges, and fostering positive change for the communities. The practice of impact assessment provides corporations with a systematic framework to undertake such an evaluation and recalibrate its future CSR practices if necessary.

Recognizing the significance of impact assessment for steering CSR practices, in 2021, the Ministry of Corporate Affairs introduced amendments to Section 135 of the Companies Act, 2013 and the Companies (CSR) Rules 2014, making CSR impact assessment mandatory for companies with minimum average CSR obligation of Rs. 10 crores or more in the immediately preceding 3 financial years as well as for companies that have CSR projects with outlays of minimum Rs. 1 crore and which have been completed not less than 1 year before undertaking impact assessment.

Cont'd

The intent is to encourage companies to take considered decisions before deploying CSR amounts and assess the impact of their CSR spending. This not only serves as feedback for companies to plan and allocate resources better but shall also deepen the impact of CSR.

Laurus Labs CSR activity:

Laurus Labs Limited driven by its commitment to catalyse societal transformation persistently embarks on a dedicated path of social impact. Laurus Labs believe in making a positive impact on the communities it serves and operates in. As a result, their Corporate Social Responsibility (CSR) philosophy reflects this commitment . Laurus labs focus on interventions in key areas that they believe will uplift the communities they operate in These areas are bucketed into four themes, Education, Healthcare, Sustainability and Sports. these are further supplemented by other needs-based interventions

Laurus Labs interact regularly with NGOs, local leaders, and community representatives through formal and informal channels to apprise them of their activities and at the same time to find out how they can contribute better to the welfare of the community. It spends CSR funds through Laurus charitable trust, other NGOs, Govt. of A.P and Universities.

The CSR activities would be as per the CSR policy of the company and the same shall be reviewed from time to time pursuant to changes in the need of target beneficiaries and the changes in the scope.

Cont'd

About Laurus Charitable Trust:

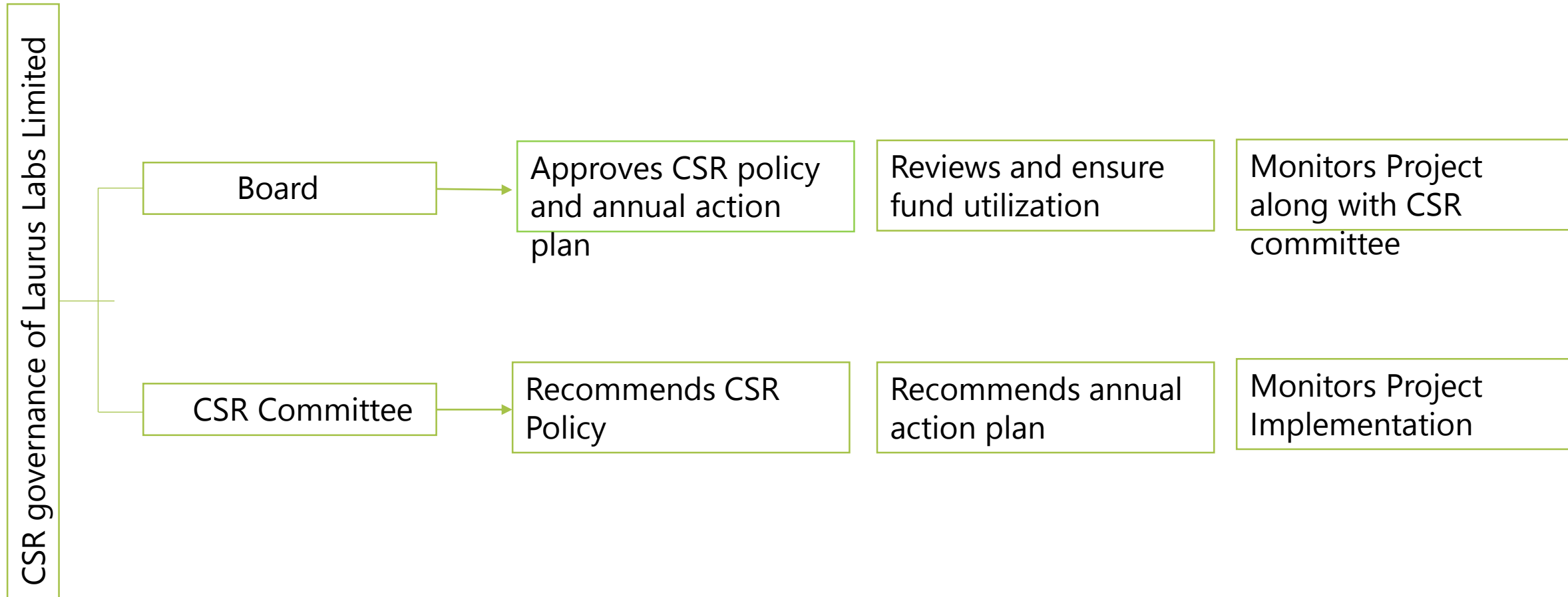
The Laurus Charitable Trust, established on August 3, 2017, is a non-governmental, nonprofit organization based in Hyderabad, Telangana. The trust was registered under the Indian Trusts Act with the goal of addressing multiple social issues. It focuses on various sectors including education, health, employment, art and culture, gender issues, sports, and environmental concerns. Additionally, it aims to empower women and alleviate poverty in specific regions of Andhra Pradesh, including Guntur, Krishna, and Visakhapatnam.

The trust's office is located within the premises of Laurus Labs Limited in Banjara Hills, Hyderabad. As part of its activities, Laurus Charitable Trust has been involved in projects such as a mobile soil testing facility for farmers in partnership with ICRISAT, highlighting its commitment to sustainable agricultural practices.

About Us:

Ramasamy Koteswara Rao & Co LLP, Chartered Accountants has been practicing CA firm over two decades. Specialize in Audit and Assurance Services, Direct and Indirect Taxation, Financial and Management accounting, Internal and Management Audits, internal finance controls, as well as risk management and assessment. The firm emphasizes integrity, ethical practices, independence, and mutual respect as core values in delivering quality service to their clients. The founders are associated in the field for chartered accountancy for over 40 years.

CSR Governance Mechanism



Approach and Methodology

- **Rationale of the study**

To undertake social impact assessment of CSR initiatives being implemented by Laurus Labs for FY 2021-22 and 2022-23 across various categories.

- **Research Framework**

For assessment of the impact of CSR activities undertaken by Laurus Labs Limited, the OECD DAC Evaluation Criteria were used. This criteria provides a normative framework to determine the impact of any development intervention. The framework has defined six (6) evaluation criteria i.e., Relevance, Coherence, Effectiveness, Efficiency, Impact, and Sustainability and Interviews wherever required.

Relevance

The extent to which the intervention objectives & design respond to **beneficiaries , global, country, and partner/institution needs, policies, and priorities**, & continue to do so if circumstances change.

Effectiveness

The extent to which the intervention achieved, or is expected to achieve, its objectives, and its results, including any **differential results across groups**.

Impact

The extent to which the intervention has generated or is expected to generate **significant positive or negative**, intended or unintended, higher-level effects.

Sustainability

The extent to which the net benefits of the **intervention continue, or are likely to continue**.

Efficiency

The extent to which the intervention delivers, or is likely to deliver, results in **an economic and timely way**.

Coherence

The **compatibility of the intervention** with other interventions in a country, sector or institution.

RELEVANCE
is the intervention
doing the right things?

EFFECTIVENESS
is the intervention
achieving its objectives?

IMPACT
what difference does
the intervention make?



COHERENCE
how well does
the intervention fit?




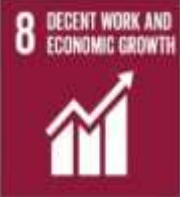

EFFICIENCY
how well are resources
being used?

SUSTAINABILITY
will the benefits last?

Laurus contribution towards Sustainable Development Goals

The Sustainable Development Goals (SDGs) of the United Nations are unique, to promote prosperity while protecting the planet. While the SDGs are not legally binding, governments are expected to take ownership and establish national frameworks for the achievement of the 17 goals. Laurus acknowledges the relevance and critical importance of the 17 SDGs to end poverty, protect the planet, and ensure prosperity for all. Laurus is committed to sustainable production and consumption and look forward to aligning the sustainability strategy to the SDGs

The projects considered for the study are highlighted below:

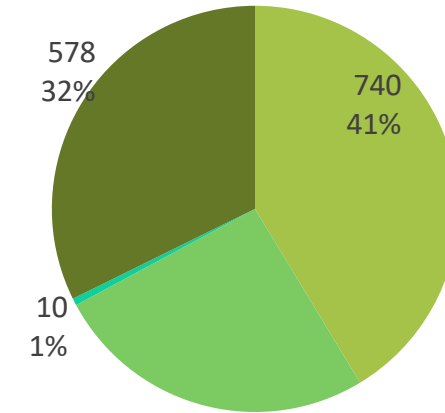
S.No	CSR Impact	Key Impact	SDG Impacted
1	Education	<ol style="list-style-type: none"> 1. Renovation and maintenance of Government schools in AP and Telangana 2. Continue to support to Universities in AP 	
2	Environment	<ol style="list-style-type: none"> 1. Maintenance of Gardens at Tirumala 2. Support to ICRISAT for Agriculture 	
3	Health Care	<ol style="list-style-type: none"> 1. Maintenance support for Sparsh Hospice Centre in Hyderabad 2. Building of OPD Block for LV Prasad Eye Institute in Vizag 3. Support to Hrudaya Foundation (Star Hospitals) for Children heart operations 4. Support to Society for aid hearing 	
4	Sports and Rural Infrastructure	<ol style="list-style-type: none"> 1. Support to promote sports 2. Enhancement of fundamental infrastructure elements such as roads, electricity, water supply, and sanitation 	 

Analysis of CSR Performance

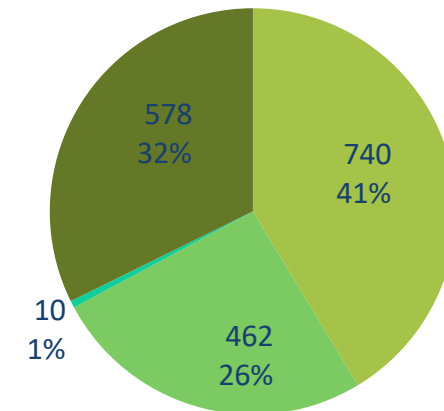
Details of CSR Spent - FY 2021-22 & FY 2022-23

FY2021-22	
Interventions	Amt (In lakhs)
Education	645
Health	439
Environment	53
Rural Development	13
Total	1,150

FY2022-23	
Interventions	Amt (In lakhs)
Education	740
Health	462
Environment	578
Sports	10
Total	1,790



■ Education ■ Health ■ Sports ■ Environment



■ Education ■ Health ■ Sports ■ Environment

CSR Impact Assessment

As per CSR Rules, the Company is required to undertake impact assessment of the CSR projects having outlays of one crore rupees or more and which have been completed not less than one year before undertaking the impact study.

The following represents CSR expenditures exceeding 1 crore in the financial years 2021-22 and 2022-23

FY 2021-22	
CSR Nature	Amt (In lakhs)
Hyderabad Eye Institute	220
Connect to Andhra	400
Stipend for Gitam University Students	157

FY 2022-23	
CSR Nature	Amt (In lakhs)
Hyderabad Eye Institute	110
Sparsh Hospice Centre	120
Connect to Andhra	400
Modification of school in Moguluru	200
ICRISAT	225
TTD Gardens	180
Rural development projects near Plant site	149

We have conducted a thorough analysis of the detailed impact study for each of the above mentioned Spent

Hyderabad Eye Institute



Introduction:

Laurus Labs through its dedicated initiatives consistently addresses societal needs. Laurus Labs has entered an MOU with Hyderabad Eye Institute ,Operating Trust of L V Prasad eye institute to sponsor the expansion of the Outpatient Department (OPD) block at L V Prasad Eye Institute ,GMR Varalakshmi campus.

Outpatient Department (OPD) Block refers to a dedicated area or building within a hospital that is specifically designed to provide outpatient services. The Outpatient Department is where patients receive medical care, consultation, diagnostic tests, and treatment without the need for overnight hospitalization.

The overall project cost is INR 330 lakhs, with a donation of INR 220 lakhs made in the fiscal year 2021-22 and the remaining INR 110 lakhs was donated in the fiscal year 2022-23 .

Relevance of the program

The construction of an Outpatient Department (OPD) block is significant in healthcare facilities, and it plays a crucial role in the overall functioning and efficiency of a hospital or medical center. A well-organized OPD layout helps in optimizing the workflow for healthcare professionals. It allows for smooth patient movement, easy registration, and quick access to consultation rooms, diagnostic services, and pharmacy facilities. This is crucial for individuals seeking outpatient services, as it enhances their overall experience and satisfaction.

The relevance of this donation lies in its direct impact on improving access to eye care services for the community. By investing in the expansion of the OPD block, Laurus Labs is contributing to the overall development and accessibility of healthcare resources. This initiative aligns with the pressing societal need for comprehensive and quality eye care services, ultimately promoting the well-being of individuals and addressing health challenges within the community.

Coherence the National Health Policy

The National Health Policy of India 2017 has a special focus on the preventive, promotive, and rehabilitative aspects. It intends to upgrade the existing healthcare infrastructure to provide a comprehensive set of preventive, promotive, curative, and rehabilitative services. Furthermore, the Policy sets an objective to reduce the prevalence of blindness to 0.25/ 1000 by 2025 and disease burden by one third from current levels.

Laurus Labs' initiatives to make medical treatment accessible to all segments of society are in line with the articulated goals of the policy.

Efficiency & Effectiveness:

With the Support of Laurus Labs , the Hyderabad Eye Institute has successfully managed to finish Civil work, false ceiling , Electrical wiring .Currently fixation of furniture is going on .The anticipated timeline for the Project's completion is March 24

Sustainability

There is a pronounced demand in society for the treatment of optical diseases. To extend these benefits to the larger group, Laurus ensures efficient and strategic allocation of resources to maintain the continuity of free health services. Establish and maintain collaborations with government agencies, non-profit organizations, private sectors, and other stakeholders. These partnerships can provide additional resources, expertise, and support for sustained health services.

Impact

We strongly believe once the Outpatient Department (OPD) block is operational, it helps improve access to healthcare services, especially for communities or regions with limited medical facilities. This can reduce barriers to healthcare and ensure that individuals can receive timely and necessary medical attention

This Outpatient Department (OPD) block is also engaged in health education, screenings, and vaccination programs. This helps in preventing diseases, reducing the burden on the healthcare system, and promoting a healthier community

Conclusion :

In summary, the purpose of donating an OPD block is multifaceted, ranging from improving healthcare access and community empowerment to promoting preventive care and addressing specific health needs. Such donations can have a lasting positive impact on the health and well-being of the communities they serve.





Rotary Club Sparsh Hospice Centre

Introduction

Sparsh Hospice is the first Palliative care centre in the states of Telangana and AP, promoted by the trust "Rotary Club of Banjara Hills Charitable Trust". Sparsh takes care of end of life (terminally ill) patients, typically in the last stages of cancer. Sparsh provides symptom relief (pain, distress, tube feeding etc), psychological and spiritual counseling as well as food for these patients and strives to make their end peaceful and comfortable.

Laurus has contributed INR 120 lakhs in FY 22-23 to bolster Sparsh Hospice center in its efforts to offer palliative care, encompassing physical, psychological, spiritual, and social support to individuals grappling with life-threatening illnesses, including cancer.

Relevance of the program

As per the Global Atlas of Palliative Care, annually more than 5.6 crore people need palliative care with approximately 45% of such patients needing end-of-life care. Cancer accounts for nearly one-third of such cases.

Research has shown that early and holistic palliative care (involving timely pain relief and emotional, social, and spiritual support to patients and their families) helps in reduced emergency hospitalizations; greater adherence to treatment.

There exists a huge gap in the demand and supply of palliative care services in India. Some identified challenges in the provision of palliative care services in India are the focus on curative treatment, lack of training among healthcare professionals, lack of awareness and acceptability among patients and caregivers, and ambiguity regarding coverage under health insurance.

Coherence

National Health Policy 2017 identifies a growing need for palliative care in India. The Policy has identified the promotion of palliative healthcare as one of its core objectives. It also recognizes palliative care as one of the fundamental healthcare rights. Furthermore, the Policy also provides for the promotion of home-based palliative care by grass-root level healthcare workers to enhance access to it

One of the objectives of India's National Cancer Control Programme (NCCP) is to provide quality palliative care to patients with advanced disease. It also identified a need for capacity building of service providers in palliative care. It focuses on building palliative care infrastructure for augmenting accessibility to these services.

The services supported under this programme are in coherence with national priorities defined in National Health Policy 2017 and National Cancer Control Programme (NCCP)

Efficiency & Effectiveness

With the help of Laurus Labs, they were able to enhance its equipment capabilities leading to improved treatment options and elevated standards of care. Moreover, a home-based or hospice care model has been instituted allowing willing patients to receive high-quality palliative care in the comfort of their homes administered by trained professional

Sustainability:

Palliative care in India is not available widely at affordable cost. With advancement in medical technologies, increasing awareness, and improving healthcare infrastructure, diagnoses of cancer cases are expected to increase. Engaging in cooperative partnerships with both governmental and non-governmental organizations would contribute to offering sustained health services with ample support

Impact :

Treatment of cancer involves substantial costs and due to inadequate public health infrastructure and lack of coverage under health insurance, such expenses add to out-of-pocket expenses for patients. The cost burden of the treatment of chronic diseases is one of the factors pushing people into poverty. The services offered under Palliative Care Programme are free of cost .Through Palliative care Rotary club emphasized effective pain management techniques, helping patients experience relief from physical discomfort and promoting greater comfort and well-being.

This holistic approach enhanced the overall quality of life for individuals dealing with serious illnesses

Conclusion

Palliative support is one of the least focused areas in the management of serious diseases, especially cancer. Management of symptoms and providing a psychologically and socially conducive environment is an important aspect of quality of life. Furthermore, this programme has created an enabling ground for developing a formal largescale palliative care programme. It has helped in developing awareness among patients, care givers, and healthcare professionals towards acceptance of palliative care





Connect to Andhra & Modification of school in Moguluru

Introduction

Education serves as the cornerstone for both individual and comprehensive community development. When a person is adequately educated, they can actively contribute to shaping a contemporary society leading to a productive and harmonious community.

Connect to Andhra

Government of Andhra Pradesh has created 'Connect to Andhra' (CTA) a platform for cooperation and collaboration of all development and philanthropic activities in the state by various stakeholders like Corporates, Non-Resident Telugus (NRTs), philanthropists and other development agencies. '

Recognizing the significance of education, Laurus Labs has donated Rs 4 crore each in FY 21-22 & 22-23 to Connect to Andhra towards building infrastructure in government schools in Tenali, Kanchikacherla, Veerulapadu, Atchutapuram and Paravada mandals under the second phase of Nadu-Nedu project

Modification of schools in Moguluru

Laurus Labs has taken the initiative to upgrade the school at Moguluru, a village in NTR district of Andhra Pradesh. Laurus Labs has contributed a total of INR 200 lakhs for the improvement of school infrastructure.

Relevance of the program

The relevance of upgrading government schools is significant for several reasons encompassing social, economic, and public welfare perspectives. A well-educated and healthy population is a key driver of economic development. Upgrading schools and hospitals contributes to human capital development, which in the long run positively impacts productivity, innovation, and overall economic growth. Upgrading government schools contributes to the improvement of education quality, providing students with better facilities, resources, and a conducive learning environment. This in turn helps in nurturing a more knowledgeable and skilled workforce. Communities that have access to quality education and healthcare often experience lower levels of social unrest.

Efficiency & Effectiveness:

Under the Nadu-Nenu scheme, the Government of Andhra Pradesh has undertaken a systematic initiative to enhance the infrastructure of schools. The aim is to offer effective education and healthcare services to the people of Andhra Pradesh. In the first phase, the Andhra Pradesh government successfully upgraded the infrastructure of approximately 13,897 schools and has commenced the second phase, which encompasses improvements in 22,029 schools and there are Phase 3 & 4 scheduled.

Over the last decade, there has been a significant reduction in school dropouts in Andhra Pradesh. "Nadu Nedu" program is a flagship initiative of the Government of Andhra Pradesh, India, aimed at reducing the school dropouts.

Coherence

National Education Policy (NEP) 2020 envisions an education system rooted in Indian ethos that contributes directly to transforming India into an equitable and vibrant knowledge society by providing better infrastructure and high-quality education to all. Laurus Labs initiative to upgrade the school infrastructure is in line with the Nation's policy.

Impact

Feedback from beneficiaries and stakeholders indicates a surge in the enrollment of children and students in schools and colleges. The teaching efficiency of the staff has improved along with increased hygiene and health benefits attributable to gender-specific toilets, drinking water facilities, etc. Moreover, parents have been motivated to enroll their children in government schools, resulting in overall enhancements in the learning environment.

Stakeholders also affirmed the project's significance to their community and praised the efficiency and effectiveness of the project interventions.

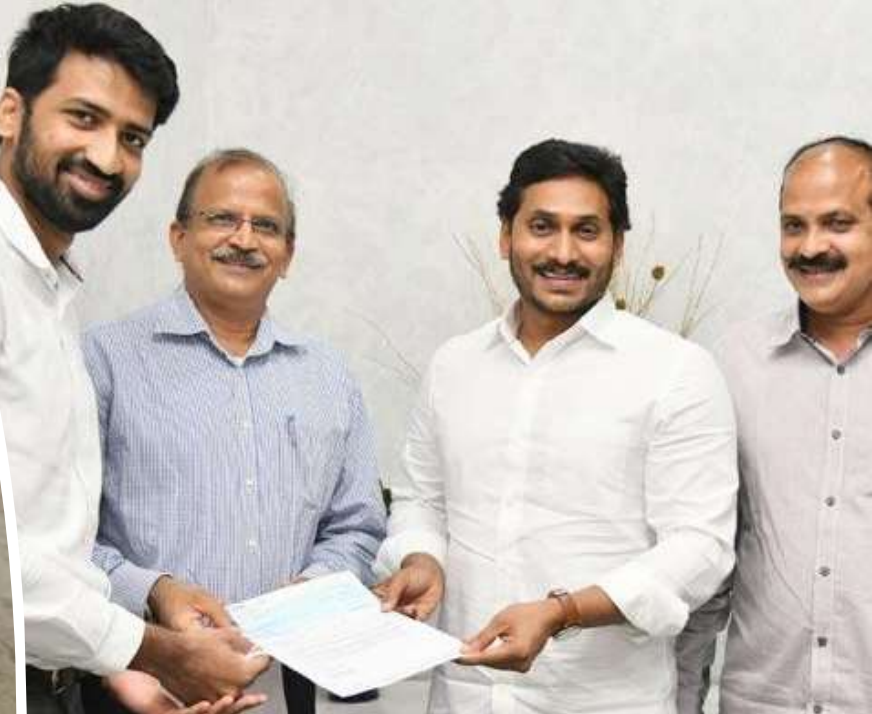
The initiatives taken up are sustainable because the concerned school management has taken up the responsibility to sustain the services.

Conclusion

In conclusion, the upgrading of school infrastructure stands as a pivotal investment with multifaceted benefits that extend beyond the confines of educational institutions. As classrooms transform into dynamic and well-equipped spaces, the ripple effects touch upon the very fabric of society. Improved infrastructure fosters an enriched learning environment, positively impacting academic outcomes, student enrollment, and attendance rates. Moreover, the integration of technology and the provision of adequate facilities contribute to the holistic development of students, preparing them for the challenges of the modern world

The impact of such upgrades transcends the academic realm, reaching into the broader community. By promoting extracurricular activities, community engagement, and gender empowerment, upgraded schools become catalysts for social change. They not only nurture the intellectual capabilities of students but also contribute to their physical health, well-being, and character development.

Nadu –Nedu
(Modifications of
schools in Andhra
Pradesh)





Modification of Schools in Moguluru



Stipend for Students at Gitam University

Introduction:

Laurus Labs holds the belief that education forms the foundation of human development and has undertaken numerous initiatives to offer quality education to underprivileged students. The goal is to foster inclusive education, enabling students to pursue their preferred academic and vocational paths, ultimately integrating them into mainstream society

Laurus Labs has offered Stipends of INR 157 lakhs in FY 21-22 to students in Gitam University located in Vishakhapatnam aiming to assist and bolster their educational pursuits .

Relevance of the program

Providing scholarship services to poor children is highly relevant and has a multitude of positive impacts on individuals, communities, and societies. This ensures that every child, regardless of their economic background, has an equal opportunity to access quality education

Effectiveness:

The main objective of the scholarship schemes is to reduce the dropout rates in the higher classes and encourage students to pursue better education opportunities. The scholarships offered by Laurus Labs are higher than the amounts received through government scholarship schemes. Feedback from students demonstrate that many students including girls have taken up higher education because the financial support offered by Laurus. There are instances of multiple members of the family benefitting from the scholarship schemes.

Impact

Laurus has successfully implemented a program wherein students receive a monthly stipend of Rs 5000 directly contributing to their attendance in college. Additionally, the initiative covers the payment of their annual fees. This intervention has yielded positive outcomes notably in the increased enrolment rates and a noteworthy reduction in school dropout rates. The impact of this initiative extends widely, particularly benefiting students residing in remote areas where educational facilities are limited

The program has not only addressed gaps in educational access but has also played a pivotal role in enhancing awareness among parents, as educated children become catalysts for positive change within their families. Moreover, the initiative has contributed to the formation of a skilled and qualified pool of professionals

Conclusion

Providing scholarships to economically disadvantaged students is a transformative and impactful initiative. These scholarship programs, exemplified by Laurus efforts play a crucial role in breaking down barriers to education and empowering individuals who might otherwise be hindered by financial constraints. By offering direct financial support, covering annual fees, and extending their reach to remote areas these programs have not only increased enrolment rates but have also significantly reduced dropout rates.

The ripple effects of such scholarships extend beyond the individual recipients. Educated children become agents of positive change within their families, fostering a broader awareness of the value of education. Moreover, these initiatives contribute to the creation of a skilled workforce, addressing societal needs and bolstering economic development

In essence, investing in the education of economically disadvantaged students through scholarships is an investment in the future. It is a testament to the belief that every individual, regardless of their financial background, deserves access to quality education. Through these initiatives, Laurus labs not only bridge educational gaps but also pave the way for a more inclusive, knowledgeable, and prosperous society





International Crops Research Institute for Semi-Arid Tropics

Introduction

Laurus has been steadfast in its commitment to supporting Indian farmers and their contributions have been instrumental in empowering agricultural initiatives, particularly through their collaboration with ICRISAT

The International Crops Research Institute for the Semi-Arid Tropics (ICRISAT) is a pioneering, internationally recognized International Organization committed to developing and improving dryland farming and agri-food systems to address the challenges of hunger, malnutrition, poverty, and environmental degradation affecting the 2.1 billion people residing in the drylands of Asia, Sub-Saharan Africa, and beyond

Laurus Labs has contributed INR 225 lakhs towards research for development and training in agriculture ,in the form of Technology on wheels ,Improving farmers livelihoods in and around Shameerpeta area , Medchal .

Relevance of the program

Crop research contributes to the development of more resilient and high-yielding crops. This, in turn, enhances global food security by ensuring a stable and sufficient food supply for the growing population. Crop research helps develop crops that are more resilient to extreme weather conditions, pests, and diseases, ensuring sustained agricultural productivity in the face of changing climate patterns

Effectiveness

This initiative has proven highly effective, with farmers expressing positive feedback about the assistance provided by the team. They commend the team's support in decisions related to fertilizer selection and crop choices. Encouraged by the positive response, the initiative is now expanding to additional areas in Telangana, further extending its impact and outreach.

Impact

The majority of the population in India engages in farming and Laurus Labs has consistently dedicated its efforts to support farmers in various capacities. Laurus Labs contributions have played a pivotal role in initiating the "Technology on Wheels" program by ICRISAT. This innovative initiative focuses on enhancing farmers livelihoods through personalized advisories based on mobile soil testing and science-driven interventions

The primary objective behind such projects is to empower farmers by providing them with knowledge and resources, enabling them to make informed decisions regarding crop management, irrigation, fertilization, and other crucial agricultural practices. Leveraging mobile technology, these initiatives aim to extend their reach to a broader audience, particularly in remote or underserved areas, thereby bridging the gap between scientific knowledge and farmers.

In summary, Laurus Lab's collaboration with ICRISAT has significantly contributed to improving the overall livelihood of farmers by utilizing mobile-based solutions to deliver personalized advice, ensuring better-informed decisions and fostering sustainable agricultural practices.

This not only empowers farmers with the information they need to make informed decisions but also contributes to the overall improvement of farmer livelihoods.

Conclusion

"Technology on Wheels" initiative fueled by the collaborative efforts of Laurus and ICRISAT, stands as a beacon of success in empowering Indian farmers. The positive feedback from farmers attests to the initiative's effective management and its tangible impact on their agricultural decisions, from fertilizer selection to crop choices. As this initiative continues to garner praise and prove its worth, the ongoing expansion into other areas in Telangana reflects its potential to transform and elevate farming practices across diverse regions.

Overall, the initiative serves as a testament to the power of strategic collaborations and innovative approaches in making a meaningful difference in the lives of farmers, contributing to the sustainable growth of agriculture in the region.





Tirumala Tirupati Devasthanam(TTD)

Introduction

Tirumala Tirupati Devasthanams (TTD) is an independent trust which manages the temples including the Tirumala Venkateswara Temple in Andhra Pradesh, India. The trust oversees the operations and finances of the richest and the most visited religious center in the world .It is also involved in various social, religious, literary and educational activities.

Laurus has undertaken the maintenance of three gardens in Tirumala, dedicating a sum of INR 180 lakhs for their upkeep.



Relevance

Tirumala stands as one of the most revered pilgrimage sites in the country, drawing thousands of devoted pilgrims each year. The meticulous maintenance of its gardens not only enhances the overall visual charm of the surroundings but also serves as a significant economic catalyst for promoting tourism. The well-kept green spaces contribute to the spiritual ambiance of the site, creating a serene atmosphere for visitors and further solidifying Tirumala's appeal as a destination of cultural and religious significance.

Impact

Laurus, through the careful upkeep of its beautiful and tranquil gardens offers devotees a serene environment that enriches their overall visit. The maintenance efforts by Laurus not only promote biodiversity but also safeguard green areas, playing a role in maintaining ecological equilibrium. The well-tended gardens serve as a haven for relaxation and recreation, allowing visitors to engage in leisurely strolls, meditation, or simply bask in the beauty of nature. These recreational spaces contribute to the overall well-being of pilgrims and tourists, reflecting a dedication to preserving the sanctity of the pilgrimage site and fostering a harmonious atmosphere for worshipers.

Conclusion

In conclusion, the meticulous maintenance of gardens in Tirumala emerges as a multifaceted endeavor with profound implications. Beyond the aesthetic charm, the well-tended gardens contribute significantly to the spiritual, environmental, and cultural fabric of the pilgrimage site. Their role in providing a serene backdrop for worship, fostering biodiversity, attracting tourism, and preserving cultural significance underscores the importance of their sustained care. The commitment to garden maintenance not only enhances the overall experience for pilgrims and visitors but also exemplifies a broader dedication to environmental conservation, community engagement, and the preservation of Tirumala's sacred heritage. In essence, the well-maintained gardens stand as a testament to the harmonious blend of nature, culture, and spirituality in this revered destination.





Rural Development near Plant Site

Introduction

Rural development projects are initiatives designed to enhance the economic, social, and environmental well-being of communities in rural areas. These projects aim to address the unique challenges and opportunities faced by rural populations, fostering sustainable growth and improving overall quality of life.

Typically implemented by government agencies, non-profit organizations, or international development bodies, these projects encompass a range of activities tailored to the specific needs of rural communities. The overarching goal is to empower these communities, promote inclusivity, and create resilient, self-sufficient environments. Key focus areas of rural development projects often include infrastructure improvement, agricultural development, education, healthcare, and the promotion of sustainable practices.

Laurus has contributed INR 149 lakhs in FY 2022-23 towards rural development of villages in Atchutapuram and Paravada

Relevance

Relevance of rural development lies in addressing the unique challenges faced by rural areas and fostering sustainable growth to improve the overall well-being of the communities. Many rural areas experience higher levels of poverty. Rural development projects focus on creating economic opportunities, providing access to education and healthcare, and empowering communities to lift themselves out of poverty. Rural development projects create job opportunities by supporting local industries, promoting entrepreneurship, and facilitating skill development. This helps reduce migration to urban areas in search of employment.

Impact

The impact of rural development is multi-faceted, encompassing economic, social, and environmental dimensions. Successful rural development initiatives can bring about positive changes that contribute to the overall well-being and sustainability of rural communities.

Laurus through the third-party contractors has prioritized the enhancement of fundamental infrastructure elements such as roads, electricity, water supply, and sanitation. This effort not only elevates the overall quality of life but also fosters economic activities and strengthens connectivity. Additionally, Laurus has undertaken the refurbishment of village hospitals, contributing to improved healthcare infrastructure. Simultaneously, the promotion of health awareness initiatives has yielded positive outcomes, further enhancing the well-being of the community.

Conclusion

Through initiatives addressing economic, social, and environmental dimensions, rural development strives to uplift individuals, empower communities, and bridge disparities. The impacts are far-reaching, encompassing enhanced economic opportunities, poverty reduction, improved infrastructure, and heightened access to education and healthcare. It is evident that investing in the well-being of rural communities is essential for creating a more inclusive, resilient, and balanced society overall.



List of Abbreviations

- OECD- DAC - Organization for Economic Co-operation and Development - Development Assistance Committee
- ICRISAT - International Crops Research Institute for the Semi-Arid Tropics
- CFO - Chief Financial Officer
- CSR - Corporate Social Responsibility
- TTD - Tirumala Tirupati Devasthanams
- API - Active Pharmaceutical Ingredients
- FDF - Finished Dosage Forms
- NGO - Non-governmental organization
- OPD - Outpatient Department
- NCCP - National Cancer Control Programme

Thank You



Ramasamy Koteswara Rao and Co LLP
Chartered Accountants
Hyderabad | Guntur | Vizag | Srikakulam | Sangareddy